



Parts for all brands of trailers.

TRAILER PARTS[®]

TRAILER CATALOG

*Proven, reliable and
always innovative.*

TRP[®] offers reliable aftermarket products that are designed and tested to exceed customers' expectations regardless of the trailer make, model or age.

ADDENDUM

CONTENTS

BRAKE DRUMS

GuniteC-2

SLACK ADJUSTERS

GuniteC-2

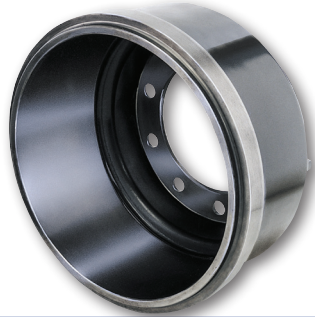
CAMSHAFTS

TRP[®] CamshaftsC-3

This addendum includes changes to the first printing of the Trailer Catalog (TRP200EN-B).

2/10/2011

BRAKE DRUMS



Revised
TRP201EN-B1
page 1-8

GUNITE

Table 1-7 : Brake Drums – Gunite

Missing Attributes added to Table 1-7.

Part Number	Description	Pilot Diameter	Bolt Circle Diameter	Bolt Holes	Weight
3600A	16.50 x 7.00 Brake Drum Outboard Mounted Not Balanced	8.78	11.25	10	112
3600AX	16.50 x 7.00 Brake Drum Outboard Mounted Balanced	8.78	11.25	10	112
3782X	16.50 x 8.00 Brake Drum Outboard Mounted Balanced	8.78	11.25	10	123
3807X	16.50 x 8.62 Brake Drum Outboard Mounted Balanced	8.78	11.25	10	127
3922X	16.50 x 7.00 Value Plus Brake Drum Outboard Mounted Balanced	8.78	11.25	10	105
9006X	16.50 x 7.00 GOLD Brake Drum Outboard Mounted Lightweight Balanced	8.78	11.25	10	94
9019X	16.50 x 8.62 GOLD Brake Drum Outboard Mounted Lightweight Balanced	8.78	11.25	10	107

Information provided by Gunite Corporation.

SLACK ADJUSTERS

Revised
TRP201EN-B1
page 1-11

GUNITE

Table C-1: Slack Adjusters – Gunite

Product Added: Gunite Slack Adjusters

Part Number	Description	Lever Length	Spline	Comments
AS1143	5-1/2" 37 Spline Automatic Slack Adjuster	5-1/2"	1-5/8" 37	
AS1144	6" 37 Spline Automatic Slack Adjuster	6"	1-5/8" 37	
AS1146	5-1/2" 10 Spline Automatic Slack Adjuster	5-1/2"	1- 1/2" 10	Used mainly in Canada
AS1147	6" 10 Spline Automatic Slack Adjuster	6"	1- 1/2" 10	Used mainly in Canada
AS1149	5-1/2" 28 Spline Automatic Slack Adjuster	5-1/2"	1- 1/2" 28	
AS1150	6" 29 Spline Automatic Slack Adjuster	6"	1- 1/2" 28	

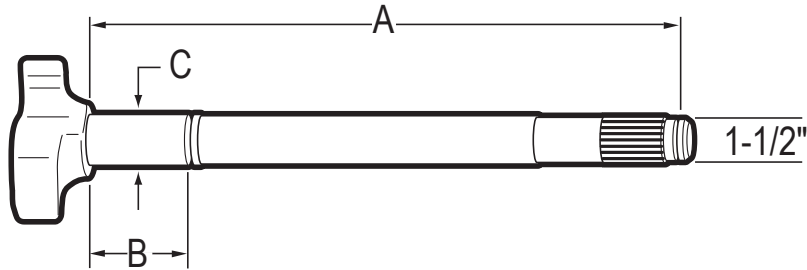
Information provided by Gunite Corporation.



Gunite

CAMSHAFTS

Revised
TRP201EN-B1
page 1-16, 1-17



TRP® CAMSHAFTS

Table 1-13: Camshafts – TRP®

Column "C" attributes corrected in Table 1-13.

Part Number	Description	Head End	Spline	A	B	C
CS1425	Camshaft, 1-1/2"-10 Spline, LH, 20-3/8"	LH	1-1/2"-10	20-3/8"	2-7/32"	1-1/2"
CS1424	Camshaft, 1-1/2"-10 Spline, RH, 20-3/8"	RH	1-1/2"-10	20-3/8"	2-7/32"	1-1/2"
CS1095	Camshaft, 1-1/2"-10 Spline, LH, 23-7/16"	LH	1-1/2"-10	23-7/16"	2-7/32"	1-1/2"
CS1094	Camshaft, 1-1/2"-10 Spline, RH, 23-7/16"	RH	1-1/2"-10	23-7/16"	2-7/32"	1-1/2"
CS7219	Camshaft, 1-1/2"-10 Spline, LH, 26-1/2"	LH	1-1/2"-10	26-1/2"	2-7/32"	1-1/2"
CS7220	Camshaft, 1-1/2"-10 Spline, RH, 26-1/2"	RH	1-1/2"-10	26-1/2"	2-7/32"	1-1/2"
CS1425A	Camshaft, 1-1/2"-10 Spline, Q, LH, 20-3/8"	LH	1-1/2"-10	20-3/8"	2-7/32"	1-1/2"
CS1424A	Camshaft, 1-1/2"-10 Spline, Q, RH, 20-3/8"	RH	1-1/2"-10	20-3/8"	2-7/32"	1-1/2"
CS5520	Camshaft, 1-1/2"-10 Spline, Q, LH, 23-7/16"	LH	1-1/2"-10	23-7/16"	2-7/32"	1-1/2"
CS5521	Camshaft, 1-1/2"-10 Spline, Q, RH, 23-7/16"	RH	1-1/2"-10	23-7/16"	2-7/32"	1-1/2"
CS5524	Camshaft, 1-1/2"-28 Spline, LH, 20-3/8"	LH	1-1/2"-28	20-3/8"	2-7/32"	1-1/2"
CS5525	Camshaft, 1-1/2"-28 Spline, RH, 20-3/8"	RH	1-1/2"-28	20-3/8"	2-7/32"	1-1/2"
CS5526	Camshaft, 1-1/2"-28 Spline, LH, 23-1/2"	LH	1-1/2"-28	23-1/2"	2-7/32"	1-1/2"
CS5527	Camshaft, 1-1/2"-28 Spline, RH, 23-1/2"	RH	1-1/2"-28	23-1/2"	2-7/32"	1-1/2"
CS9100	Camshaft, 1-1/2"-28 Spline, LH, 24"	LH	1-1/2"-28	24"	2-7/32"	1-1/2"
CS9101	Camshaft, 1-1/2"-28 Spline, RH, 24"	RH	1-1/2"-28	24"	2-7/32"	1-1/2"
CS9731	Camshaft, 1-1/2"-28 Spline, LH, 17-3/8"	LH	1-1/2"-28	17-3/8"	2-7/32"	1-5/8"
CS9732	Camshaft, 1-1/2"-28 Spline, RH, 17-3/8"	RH	1-1/2"-28	17-3/8"	2-7/32"	1-5/8"
CS9733	Camshaft, 1-1/2"-28 Spline, LH, 20-3/8"	LH	1-1/2"-28	20-3/8"	2-7/32"	1-5/8"
CS9734	Camshaft, 1-1/2"-28 Spline, RH, 20-3/8"	RH	1-1/2"-28	20-3/8"	2-7/32"	1-5/8"
CS9735	Camshaft, 1-1/2"-28 Spline, LH, 23-1/2"	LH	1-1/2"-28	23-1/2"	2-7/32"	1-5/8"
CS9736	Camshaft, 1-1/2"-28 Spline, RH, 23-1/2"	RH	1-1/2"-28	23-1/2"	2-7/32"	1-5/8"
CS10909	Camshaft, 1-1/2"-28 Spline, LH, 24-1/8"	LH	1-1/2"-28	24-1/8"	2-7/32"	1-5/8"
CS10910	Camshaft, 1-1/2"-28 Spline, RH, 24-1/8"	RH	1-1/2"-28	24-1/8"	2-7/32"	1-5/8"
CS9059	Camshaft, 1-1/2"-28 Spline, LH, 23-11/16"	LH	1-1/2"-28	23-11/16"	2-7/32"	1-5/8"
CS9060	Camshaft, 1-1/2"-28 Spline, RH, 23-11/16"	RH	1-1/2"-28	23-11/16"	2-7/32"	1-5/8"
CS3856	Camshaft, 1-1/2"-28 Spline, LH, 23-1/2"	LH	1-1/2"-28	23-1/2"	2-7/32"	1-1/2"
CS3857	Camshaft, 1-1/2"-28 Spline, RH, 23-1/2"	RH	1-1/2"-28	23-1/2"	2-7/32"	1-1/2"
CS2441A	Camshaft, 1-1/2"-28 Spline, LH, 17-5/16"	LH	1-1/2"-28	17-5/16"	1-23/32"	1-5/8"

Part Number	Description	Head End	Spline	A	B	C
CS2442A	Camshaft, 1-1/2"-28 Spline, RH, 17-5/16"	RH	1-1/2"-28	17-5/16"	1-23/32	1-5/8"
CS11860	Camshaft, 1-1/2"-28 Spline, LH, 26-1/4"	LH	1-1/2"-28	26-1/4"	2-7/32"	1-5/8"
CS11861	Camshaft, 1-1/2"-28 Spline, RH, 26-1/4"	RH	1-1/2"-28	26-1/4"	2-7/32"	1-5/8"
CS2445A	Camshaft, 1-1/2"-28 Spline, LH, 24-1/16"	LH	1-1/2"-28	24-1/16"	1-23/32"	1-5/8"
CS2446A	Camshaft, 1-1/2"-28 Spline, RH, 24-1/16"	RH	1-1/2"-28	24-1/16"	1-23/32"	1-5/8"
CS9091	Camshaft, 1-1/2"-28 Spline, LH, 17-5/16"	LH	1-1/2"-28	17-5/16"	1-63/64"	1-5/8"
CS9092	Camshaft, 1-1/2"-28 Spline, RH, 17-5/16"	RH	1-1/2"-28	17-5/16"	1-63/64"	1-5/8"
CS9093	Camshaft, 1-1/2"-28 Spline, LH, 20-13/32"	LH	1-1/2"-28	20-13/32"	1-63/64"	1-5/8"
CS9094	Camshaft, 1-1/2"-28 Spline, RH, 20-13/32"	RH	1-1/2"-28	20-13/32"	1-63/64"	1-5/8"
CS6082	Camshaft, 1-1/2"-28 Spline, LH, 24-1/16"	LH	1-1/2"-28	24-1/16"	1-63/64"	1-5/8"
CS6081	Camshaft, 1-1/2"-28 Spline, RH, 24-1/16"	RH	1-1/2"-28	24-1/16"	1-63/64"	1-5/8"
CS11866	Camshaft, 1-1/2"-28 Spline, LH, 11-1/32"	LH	1-1/2"-28	11-1/32"	2-5/16"	1-1/2"
CS11867	Camshaft, 1-1/2"-28 Spline, RH, 11-1/32"	RH	1-1/2"-28	11-1/32"	2-5/16"	1-1/2"
CS5506	Camshaft, 1-1/2"-28 Spline, Q, LH, 17-5/16"	LH	1-1/2"-28	17-5/16"	1-63/64"	1-5/8"
CS5507	Camshaft, 1-1/2"-28 Spline, Q, RH, 17-5/16"	RH	1-1/2"-28	17-5/16"	1-63/64"	1-5/8"
CS5508	Camshaft, 1-1/2"-28 Spline, Q, LH, 20-13/32"	LH	1-1/2"-28	20-13/32"	1-63/64"	1-5/8"
CS5509	Camshaft, 1-1/2"-28 Spline, Q, RH, 20-13/32"	RH	1-1/2"-28	20-13/32"	1-63/64"	1-5/8"
CS5510	Camshaft, 1-1/2"-28 Spline, Q, RH, 24-1/16"	RH	1-1/2"-28	24-1/16"	1-63/64"	1-5/8"
CS5511	Camshaft, 1-1/2"-28 Spline, Q, RH, 24-1/16"	RH	1-1/2"-28	24-1/16"	1-63/64"	1-5/8"
CS2441B	Camshaft, 1-1/2"-28 Spline, Q, LH, 17-5/16"	LH	1-1/2"-28	17-5/16"	1-45/64"	1-5/8"
CS2442B	Camshaft, 1-1/2"-28 Spline, Q, RH, 17-5/16"	RH	1-1/2"-28	17-5/16"	1-45/64"	1-5/8"
CS2443B	Camshaft, 1-1/2"-28 Spline, Q, LH, 20-13/32"	LH	1-1/2"-28	20-13/32"	1-45/64"	1-5/8"
CS2444B	Camshaft, 1-1/2"-28 Spline, Q, RH, 20-13/32"	RH	1-1/2"-28	20-13/32"	1-45/64"	1-5/8"
CS2445B	Camshaft, 1-1/2"-28 Spline, Q, LH, 24-1/16"	LH	1-1/2"-28	24-1/16"	1-45/64"	1-5/8"
CS2446B	Camshaft, 1-1/2"-28 Spline, Q, RH, 24-1/16"	RH	1-1/2"-28	24-1/16"	1-45/64"	1-5/8"
CS2099	Camshaft, 1-5/8"-37 Spline, LH, Fruehauf, 21-1/8"	LH	1-5/8"-37	21-1/8"	2-5/32"	1-5/8"
CS2100	Camshaft, 1-5/8"-37 Spline, RH, Fruehauf, 21-1/8"	RH	1-5/8"-37	21-1/8"	2-5/32"	1-5/8"
CS1563	Camshaft, 1-5/8"-37 Spline, LH, Fruehauf, 16-1/8"	LH	1-5/8"-37	16-1/8"	2-5/32"	1-5/8"
CS1564	Camshaft, 1-5/8"-37 Spline, RH, Fruehauf, 16-1/8"	RH	1-5/8"-37	16-1/8"	2-5/32"	1-5/8"
CS3861	Camshaft, 1-5/8"-37 Spline, LH, Fruehauf, 23-7/8"	LH	1-5/8"-37	23-7/8"	2-7/32"	1-5/8"
CS3862	Camshaft, 1-5/8"-37 Spline, RH, Fruehauf, 23-7/8"	RH	1-5/8"-37	23-7/8"	2-7/32"	1-5/8"